

Collet knobs – the classic range

	10mm	11mm	13mm	15mm	21mm	29mm
	For shaft sizes 2mm, 3mm, 4mm and 1/8 in	For shaft sizes 2mm, 3mm, 4mm and 1/8 in	For shaft sizes 2mm, 3mm, 4mm and 1/8 in	For shaft sizes 3mm, 4mm, 6mm, 1/8 in and 1/4 in. Also 3/16 in. on types: S, SP, SB, SD & SW Available in Soft-touch	For shaft sizes 3mm, 4mm, 6mm, 1/8 in and 1/4 in. Also 3/16 in. on types: S, SP, SB, & SW Available in Soft-touch	For shaft sizes 3mm, 4mm, 6mm, 1/8 in and 1/4 in. Also 3/16 in. on types: S, SP, SB, & SW
TYPE						
S	S100 S101 (with line)	S110 S111 (with line)	S130 S131 (with line)	S150 S151 (with line)	S210 S211 (with line)	S290 S291 (with line)
TYPE						
K		K110 K111 (with line)		K150 K151 (with line)	K210 K211 (with line)	K290 K291 (with line)
TYPE						
SP		SP110 SP111 (with line)		SP150 SP151 (with line)	SP210 SP211 (with line)	SP290 SP291 (with line)
TYPE						
KP					KP210 KP211 (with line)	
TYPE						
SB				SB150 SB151 (with line on one wing) SB153 (with line on both wings)	SB210 SB211 (with line on one wing) SB213 (with line on both wings)	SB290 SB291 (with line on one wing) SB293 (with line on both wings)
TYPE						
SN		SN110 SN111 (with line)		SN150 SN151 (with line)		
TYPE						
SW				SW150 SW151 (with line)	SW210 SW211 (with line)	SW290 SW291 (with line)
TYPE						
W				W150 W151 (with line)	W210 W211 (with line)	W290 W291 (with line)

38mm

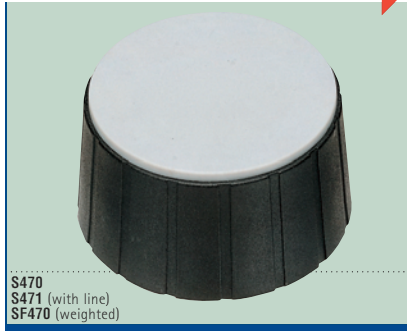
For shaft sizes 3mm, 4mm, 6mm, 1/8 in and 1/4 in and 3/16 in



S380
S381 (with line)

47mm

For shaft sizes 6mm and 1/4 in



S470
S471 (with line)
SF470 (weighted)

TYPE SD Integral Dial Knob (15mm)

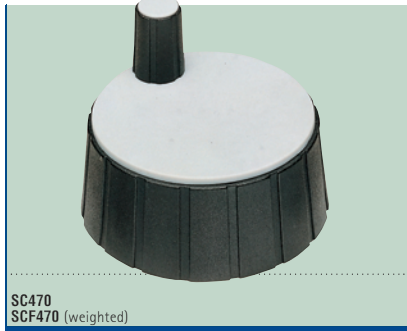


SD150
SD159 (with arrow)

TYPE SC Cranked Knobs



SC380



SC470
SCF470 (weighted)

Dual Concentric Assemblies

This table shows the knob combinations suitable for dual-concentric assemblies. Please contact Selco for details of special through-hole collets, if required.



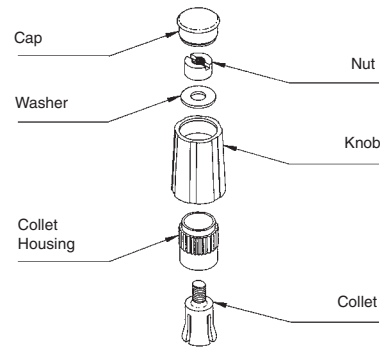
TOP	BASE
10mm	13mm
11mm	15mm
15mm	21mm
21mm	29mm

Quality materials

All collet knobs, caps, pointers and nut covers are made from Nylon 6 and have a matte finish. The transparent figure dials are made from polycarbonate and the colored dials are of Nylon 6.

Collets, sleeves and nuts, already installed into the knobs during manufacture, are of brass. All molded parts are stable in the temperature range of -20°C to +70°C.

All knobs shown are available in black 5, or gray 6 as standard. Other colors available to special order. Please state color required.



Installation Torque:

The maximum torque that should be applied to collet nuts when installing them on a shaft is as follows:

Knob Type	Shafts 2mm, 3mm, 4mm and 1/8 in		Shafts 6mm, 1/4 in and 3/16 in	
	In/Pds	Ft/Pds	In/Pds	Ft/Pds
S10 S11, SP11, K11 S13	2.60	0.22		
S15, SD15, SP15, SB15, SW15	6.94	0.58		
K15, W15, K21, W21, K29, W29	13.02	1.08		
S21, SP21, SB21, SW21 S29, SP29, SB29, SW29 S38, SC38	6.94	0.58	13.02	1.08
S47, SC47, SCF47				

Turning Torque:

The torque that can be transmitted by knobs without slipping, assuming the knob has been adequately tightened on the shaft, is as follows:

Knob Type	Shafts 2mm, 3mm, 4mm and 1/8 in and 3/16 in		Shafts 6mm and 1/4 in	
	In/Pds	Ft/Pds	In/Pds	Ft/Pds
S10 S11, SP11, K11 S13	2.17	0.18		
S15, SD15, SP15, SB15, SW15	3.47	0.29	6.94	0.58
K15, W15 S21, SP21, SB21, K21, W21 S29, SP29, SB29, SW29, K29, W29 S38, SC38	5.21	0.43	10.42	0.86
S47, SC47, SCF47				