

38mm

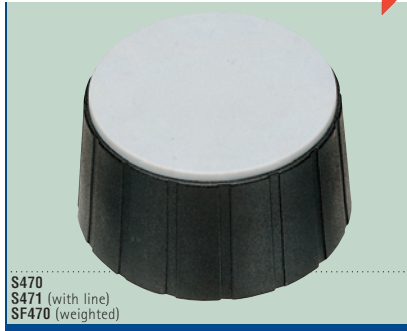
For shaft sizes 3mm, 4mm, 6mm, 1/8 in and 1/4 in and 3/16 in



S380
S381 (with line)

47mm

For shaft sizes 6mm and 1/4 in



S470
S471 (with line)
SF470 (weighted)

TYPE SD Integral Dial Knob (15mm)

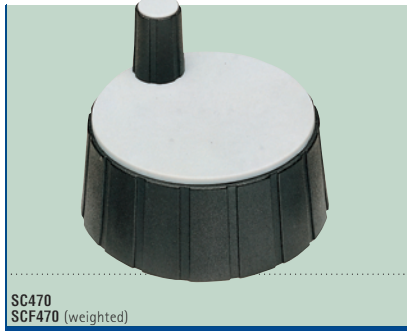


SD150
SD159 (with arrow)

TYPE SC Cranked Knobs



SC380



SC470
SCF470 (weighted)

Dual Concentric Assemblies

This table shows the knob combinations suitable for dual-concentric assemblies. Please contact Selco for details of special through-hole collets, if required.



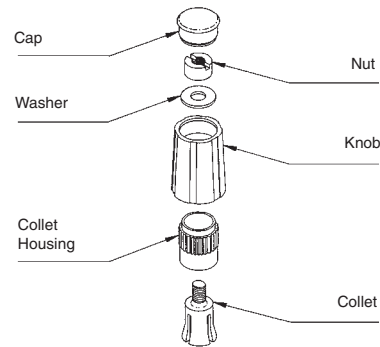
TOP	BASE
10mm	13mm
11mm	15mm
15mm	21mm
21mm	29mm

Quality materials

All collet knobs, caps, pointers and nut covers are made from Nylon 6 and have a matte finish. The transparent figure dials are made from polycarbonate and the colored dials are of Nylon 6.

Collets, sleeves and nuts, already installed into the knobs during manufacture, are of brass. All molded parts are stable in the temperature range of -20°C to +70°C.

All knobs shown are available in black 5, or gray 6 as standard. Other colors available to special order. Please state color required.



Installation Torque:

The maximum torque that should be applied to collet nuts when installing them on a shaft is as follows:

Knob Type	Shafts 2mm, 3mm, 4mm and 1/8 in		Shafts 6mm, 1/4 in and 3/16 in	
	In/Pds	Ft/Pds	In/Pds	Ft/Pds
S10 S11, SP11, K11 S13	2.60	0.22		
S15, SD15, SP15, SB15, SW15	6.94	0.58		
K15, W15, K21, W21, K29, W29	13.02	1.08		
S21, SP21, SB21, SW21 S29, SP29, SB29, SW29 S38, SC38	6.94	0.58	13.02	1.08
S47, SC47, SCF47				

Turning Torque:

The torque that can be transmitted by knobs without slipping, assuming the knob has been adequately tightened on the shaft, is as follows:

Knob Type	Shafts 2mm, 3mm, 4mm and 1/8 in and 3/16 in		Shafts 6mm and 1/4 in	
	In/Pds	Ft/Pds	In/Pds	Ft/Pds
S10 S11, SP11, K11 S13	2.17	0.18		
S15, SD15, SP15, SB15, SW15	3.47	0.29	6.94	0.58
K15, W15 S21, SP21, SB21, K21, W21 S29, SP29, SB29, SW29, K29, W29 S38, SC38	5.21	0.43	10.42	0.86
S47, SC47, SCF47				